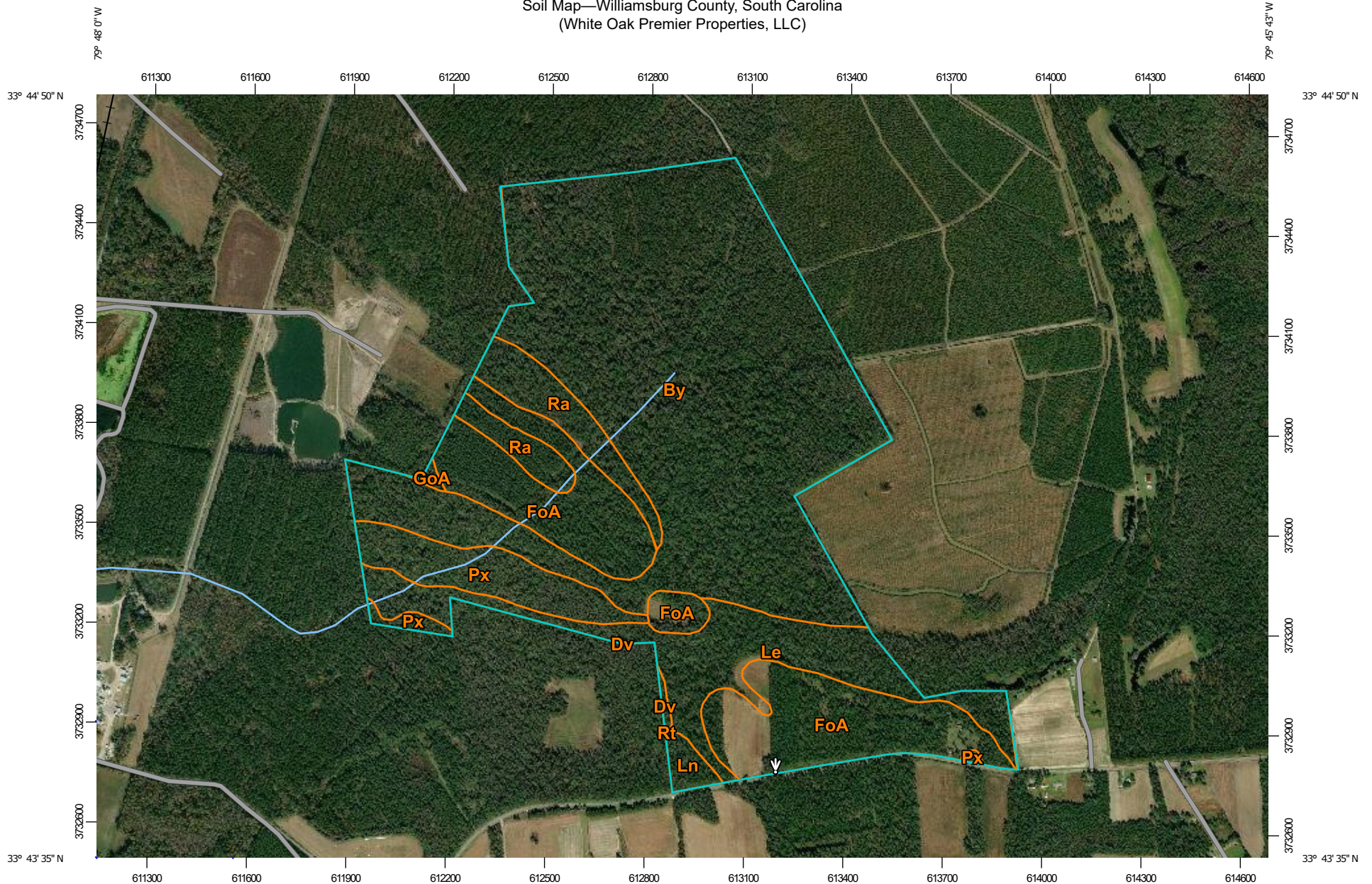
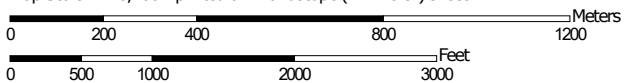


Soil Map—Williamsburg County, South Carolina
(White Oak Premier Properties, LLC)



Map Scale: 1:16,200 if printed on A landscape (11" x 8.5") sheet.




Map projection: Web Mercator Corner coordinates: WGS84 Edge tics: UTM Zone 17N WGS84



MAP LEGEND

Area of Interest (AOI)

 Area of Interest (AOI)

Soils

 Soil Map Unit Polygons

 Soil Map Unit Lines

 Soil Map Unit Points

Special Point Features



Blowout



Borrow Pit



Clay Spot



Closed Depression



Gravel Pit



Gravelly Spot



Landfill



Lava Flow



Marsh or swamp



Mine or Quarry



Miscellaneous Water



Perennial Water



Rock Outcrop



Saline Spot



Sandy Spot



Severely Eroded Spot



Sinkhole



Slide or Slip



Sodic Spot



Spoil Area



Stony Spot



Very Stony Spot



Wet Spot



Other



Special Line Features

Water Features



Streams and Canals

Transportation



Rails



Interstate Highways



US Routes



Major Roads



Local Roads

Background



Aerial Photography

MAP INFORMATION

The soil surveys that comprise your AOI were mapped at 1:20,000.

Please rely on the bar scale on each map sheet for map measurements.

Source of Map: Natural Resources Conservation Service

Web Soil Survey URL:

Coordinate System: Web Mercator (EPSG:3857)

Maps from the Web Soil Survey are based on the Web Mercator projection, which preserves direction and shape but distorts distance and area. A projection that preserves area, such as the Albers equal-area conic projection, should be used if more accurate calculations of distance or area are required.

This product is generated from the USDA-NRCS certified data as of the version date(s) listed below.

Soil Survey Area: Williamsburg County, South Carolina

Survey Area Data: Version 17, Sep 15, 2018

Soil map units are labeled (as space allows) for map scales 1:50,000 or larger.

Date(s) aerial images were photographed: Oct 29, 2015—Dec 15, 2017

The orthophoto or other base map on which the soil lines were compiled and digitized probably differs from the background imagery displayed on these maps. As a result, some minor shifting of map unit boundaries may be evident.

Map Unit Legend

| Map Unit Symbol | Map Unit Name | Acres in AOI | Percent of AOI |
|------------------------------------|--|--------------|----------------|
| By | Byars sandy loam | 272.0 | 56.2% |
| Dv | Daleville variant loam | 0.8 | 0.2% |
| FoA | Foreston fine sand, 0 to 2 percent slopes | 93.4 | 19.3% |
| GoA | Goldsboro loamy fine sand, 0 to 2 percent slopes | 0.9 | 0.2% |
| Le | Leon sand, 0 to 2 percent slopes | 57.3 | 11.8% |
| Ln | Lynchburg fine sandy loam, 0 to 2 percent slopes | 4.4 | 0.9% |
| Px | Paxville fine sandy loam | 29.1 | 6.0% |
| Ra | Rains fine sandy loam, 0 to 2 percent slopes | 26.3 | 5.4% |
| Rt | Rutlege loamy sand, ponded | 0.0 | 0.0% |
| Totals for Area of Interest | | 484.2 | 100.0% |